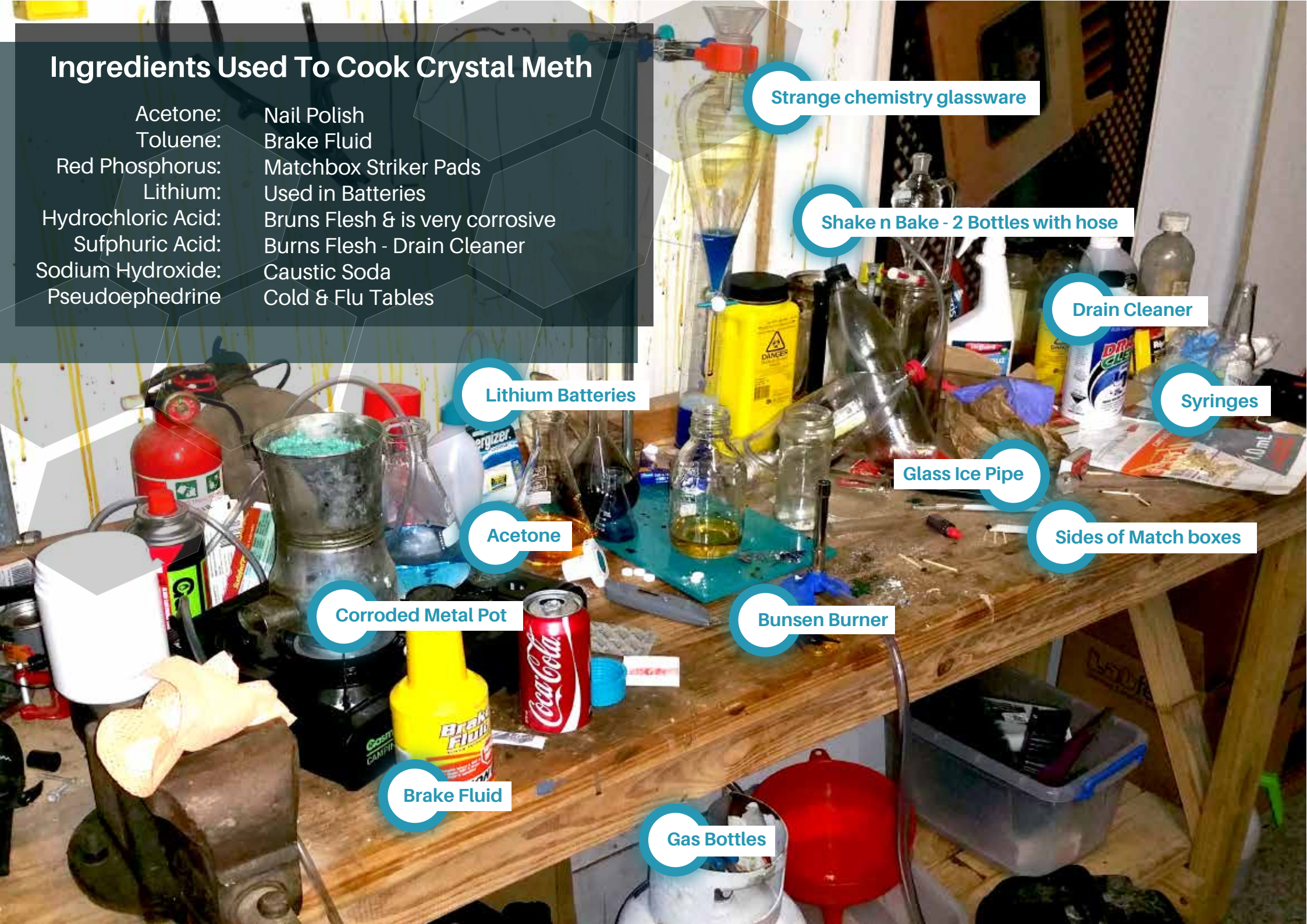


Ingredients Used To Cook Crystal Meth

- Acetone: Nail Polish
- Toluene: Brake Fluid
- Red Phosphorus: Matchbox Striker Pads
- Lithium: Used in Batteries
- Hydrochloric Acid: Burns Flesh & is very corrosive
- Sulfuric Acid: Burns Flesh - Drain Cleaner
- Sodium Hydroxide: Caustic Soda
- Pseudoephedrine: Cold & Flu Tablets



Strange chemistry glassware

Shake n Bake - 2 Bottles with hose

Drain Cleaner

Syringes

Glass Ice Pipe

Sides of Match boxes

Lithium Batteries

Acetone

Corroded Metal Pot

Bunsen Burner

Brake Fluid

Gas Bottles



Acetone
Nail Polish Remover



Drain Cleaners
Caustic Soda



Cold & Flu Pills
Pseudoephedrine



Acid Damaged Metal
Mini pot used to cook meth



Drug Bags & Ice Pipes
Drug Paraphernalia



Acids
Hydrochloric & Sulphuric



Lithium Strips
Reactive heavy metal

ITEMS TO KEEP AN EYE OUT FOR



Syringes
& burnt spoons



Match Strike Pads
Red Phosphorus

Images courtesy of



**METH LAB
CLEANERS**
AUSTRALIA

admin@methlabs.com.au

methlabs.com.au

1300 246 429